

VD Model (Deep)

Features and Strengths

Features and strengths This pad is best suited to curved or irregular surfaces.
Also, it is deep and grip around corners and edges.

Suitable for Handling

- Automotive Roof and Door.
- sheet metal
- plastic sheets
- sheet veneer
- shaped sheet metal panels



Order No.

VD50 PU - 18F - L1820T BJ18

① ② ③ ④ ⑤

▶ See pages 76-80.

① Vacuum pad Ø

VD30	- Ø30
VD40	- Ø40
• VD50	- Ø50
VD60	- Ø60
VD70	- Ø70*
VD85	- Ø85
VD85X	- Ø85

*Only for PU material

② Material

N	- NBR
S	- Silicon
CS	- C. Silicon
U	- Urethane
• PU	- Poly Urethane*

* Only for VD30,VD40,VD50
VD60, VD70

③ Thread size

M8M	- M8 X P1,25 male (VD30, VD40, VD50, VD60, VD70, VD85)
M10M	- M10 X P1,5 male (VD30, VD40, VD50, VD60, VD70, VD85)
• 18F	- G1/8" female (VD30, VD40, VD50, VD60, VD70, VD85)
12F	- G1/2" female (VD85)

Accessories order no.

L1820T BJ18

④ ⑤

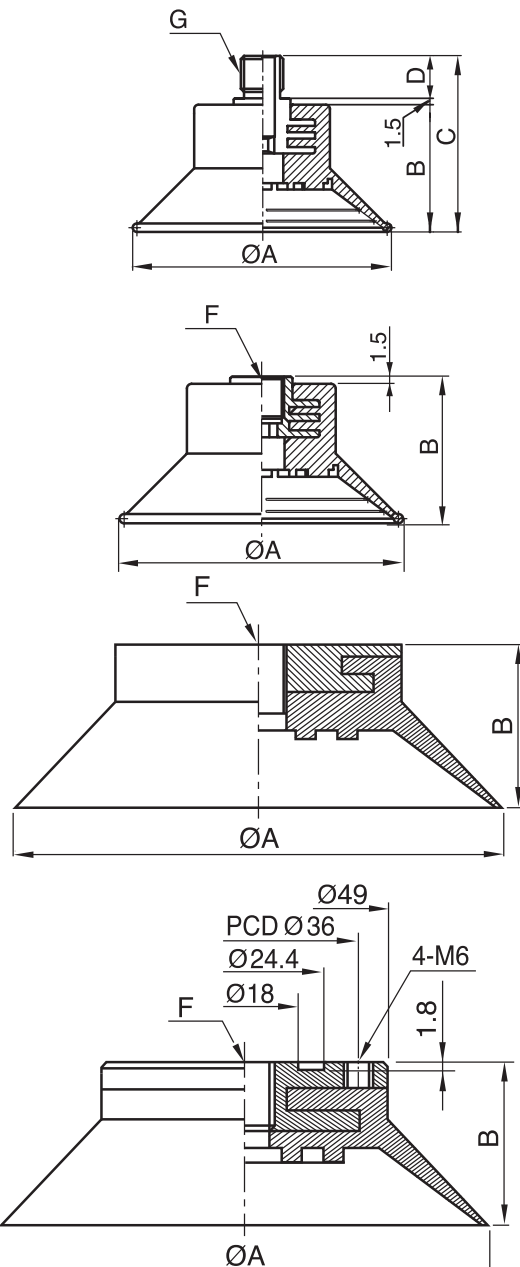
④ Level spring		⑤ Ball joint model
Model	Stroke	
L1805M	5	• BJ18
L1810T, L1810TS	10	
L1815T	15	
• L1820T*	20	
L1820TN	20	
L1830, L1830T	30	
L1850, L1850T	50	
L1230, L1230T	30	BJ12
L1250, L1250T	50	

* Not available with ball joint(BJ)

Recommended (max.) lifting forces when using level springs

Model	Volume (cm ³)	Lifting Force (kg) -Perpendicular			Lifting Force (kg) -Parallel			Level spring model
		-20kPa	-60kPa	-90kPa	-20kPa	-60kPa	-90kPa	
VD30	4,5	1,22	2,55	3,06	0,73	1,53	1,83	L1805M, L1810T(TS), L1815T, L1820T(TN), L1830(T), L1850(T)
VD40	7	2,04	3,97	5,0	1,22	2,38	3,00	L1805M, L1810T(TS), L1815T, L1820T(TN), L1830(T), L1850(T)
VD50	13,5	3,57	7,44	9,38	2,14	4,46	5,62	L1805M, L1810T(TS), L1815T, L1820T(TN), L1830(T), L1850(T)
VD60	22	5,50	14	18,5	3,3	8,4	11,1	L1805M, L1810T(TS), L1815T, L1820T(TN), L1830(T), L1850(T)
VD70	38	7,15	18,8	24,9	4,2	11,6	16,2	L1805M, L1810T(TS), L1815T, L1820T(TN), L1830(T), L1850(T)
VD85	60	10	28	39	6,0	16,8	23,4	L1805M, L1810T(TS), L1815T, L1820T(TN), L1830(T), L1850(T), L1230(T), L1250(T)
VD85X	68	10	28	39	6,0	16,8	23,4	-

Dimensional information



◀ Male thread

Model	ØA	B	C	D	G
VD30	30	25	35	10	M8XP1.25 or M10XP1.5
VD40	40	25	35	10	M8XP1.25 or M10XP1.5
VD50	50	25	35	10	M8XP1.25 or M10XP1.5
VD60	61	30	41.5	10	M8XP1.25 or M10XP1.5
VD70	72	30	41.5	10	M8XP1.25 or M10XP1.5
VD85	85	28.5	38.5	10	M8XP1.25 or M10XP1.5

◀ Female thread

Model	ØA	B	F
VD30	30	25	G1/8"
VD40	40	25	G1/8"
VD50	50	25	G1/8"
VD60	61	30	G1/8"
VD70	72	30	G1/8"

◀ Female thread

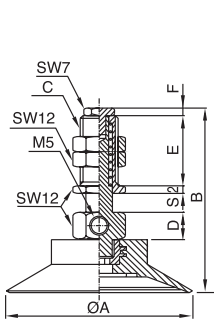
Model	ØA	B	F
VD85	85	28.5	G1/8", G1/2"

◀ Female thread

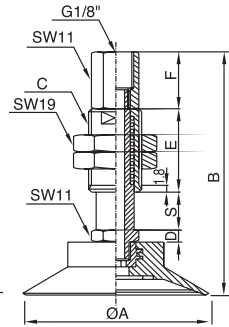
Model	ØA	B	F
VD85X	88	37	G1/8"

Dimensional information including level spring

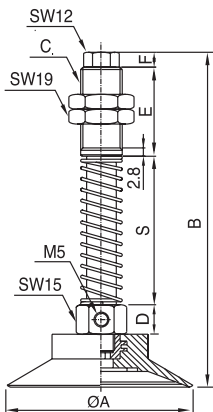
L1805M



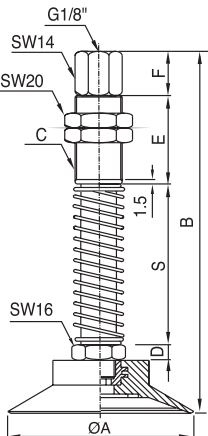
**L1810T
L1815T
L1820T**



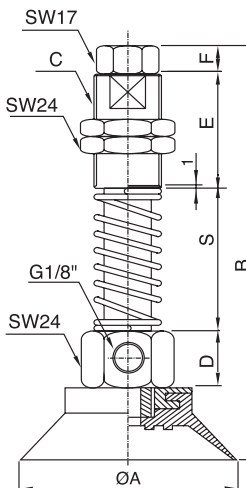
**L1830
L1850**



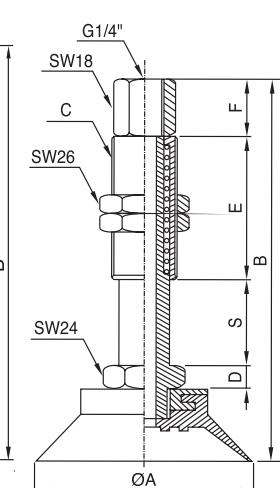
L1850T



**L1230
L1250**



L1230T

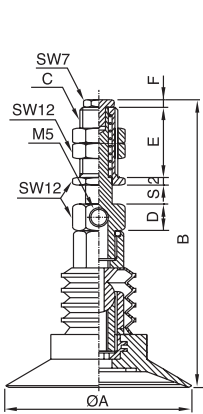


Vacuum pad	Level spring Model	ØA	B	C	D	E	F	S (stroke)
VD30	L1805M	30	61,5	M10XP1,0	9	18,5	2	0-5 (5)
VD40		40	61,5					
VD50		50	66,5					
VD60		60	66,5					
VD85		85	65					
VD30	L1810T	30	75	M14XP1,5	3	22	15	0-10 (10)
VD40		40	75					
VD50		50	80					
VD60		60	80					
VD85		85	78,5					
VD30	L1815T	30	85	M14XP1,0	3	27	15	0-15 (15)
VD40		40	85					
VD50		50	90					
VD60		60	90					
VD85		85	88,5					
VD30	L1820T	30	98,6	M16XP1,0	3	35	15	0-20 (20)
VD40		40	98,6					
VD50		50	103,6					
VD60		60	103,6					
VD85		85	102,1					
VD30	L1830	30	121	M14XP1,5	11	30	5	20-50 (30)
VD40		40	121					
VD50		50	126					
VD60		60	126					
VD85		85	124,5					
VD30	L1850	30	141	M14XP1,5	11	30	5	20-70 (50)
VD40		40	141					
VD50		50	146					
VD60		60	146					
VD85		85	144,5					
VD30	L1850T	30	145	M16XP1,0	5	30	15	20-70 (50)
VD40		40	145					
VD50		50	150					
VD60		60	150					
VD85		85	148,5					

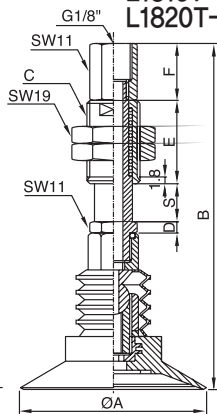
Vacuum pad	Level spring Model	ØA	B	C	D	E	F	S (stroke)
VD85	L1230	85	148,5	M20XP1,5	20	40	10	20-50(30)
VD85	L1250	85	188,5	M20XP1,5	20	40	10	40-90(50)
VD85	L1230T	85	136,5	M22XP1,5	8	50	20	0-30(30)

Dimensional information including level spring & Ball joint

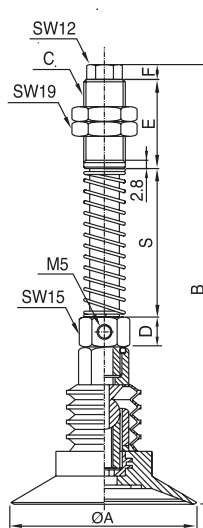
L1805M-BJ18



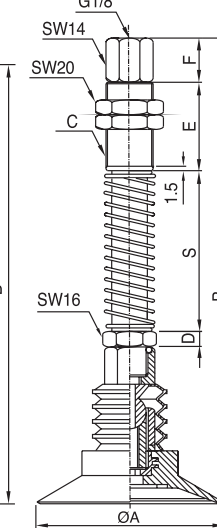
**L1810T-BJ18
L1815T-BJ18
L1820T-BJ18**



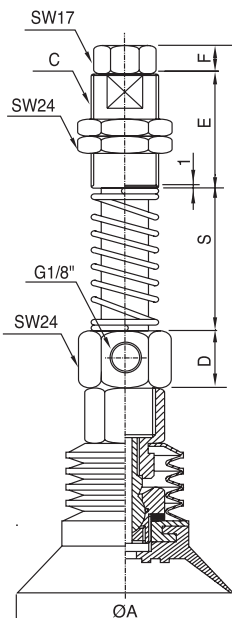
**L1830-BJ18
L1850-BJ18**



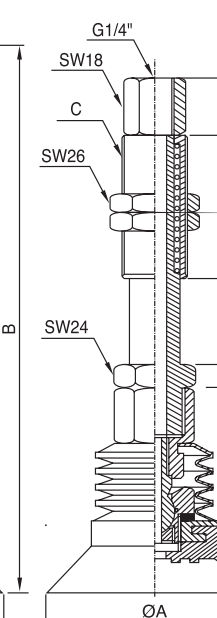
L1850T-BJ18



**L1230-BJ12
L1250-BJ12**



L1230T-BJ12



Vacuum pad	Level spring-Ball joint Model	ØA	B	C	D	E	F	S (stroke)
VD30	L1805M-BJ18	30	89,5	M10XP1,0	9	18,5	2	0-5 (5)
VD40		40	89,5					
VD50		50	89,5					
VD60		60	94,5					
VD85		85	93					
VD30	L1810T-BJ18	30	103	M14XP1,5	3	22	15	0-10 (10)
VD40		40	103					
VD50		50	103					
VD60		60	108					
VD85		85	106,5					
VD30	L1815T-BJ18	30	113	M14XP1,0	3	27	15	0-15 (15)
VD40		40	113					
VD50		50	113					
VD60		60	118					
VD85		85	116,5					
VD30	L1820T-BJ18	30	126,6	M16XP1,0	3	35	15	20-50 (30)
VD40		40	126,6					
VD50		50	126,6					
VD60		60	131,6					
VD85		85	130,1					
VD30	L1830-BJ18	30	149	M14XP1,5	11	30	5	20-70 (50)
VD40		40	149					
VD50		50	149					
VD60		60	154					
VD85		85	152,5					
VD30	L1850-BJ18	30	169	M14XP1,5	11	30	5	20-70 (50)
VD40		40	169					
VD50		50	169					
VD60		60	174					
VD85		85	172,5					
VD30	L1850T-BJ18	30	173	M16XP1,0	5	30	15	20-70 (50)
VD40		40	173					
VD50		50	173					
VD60		60	178					
VD85		85	176,5					

Vacuum pad	Level spring-Ball joint Model	ØA	B	C	D	E	F	S (stroke)
VD85	L1230-BJ12	85	192,5	M20XP1,5	20	40	10	20-50(30)
VD85	L1250-BJ12	85	232,5	M20XP1,5	20	40	10	40-90(50)
VD85	L1230T-BJ12	85	180,5	M22XP1,5	8	50	20	0-30(30)

VACUUM PAD